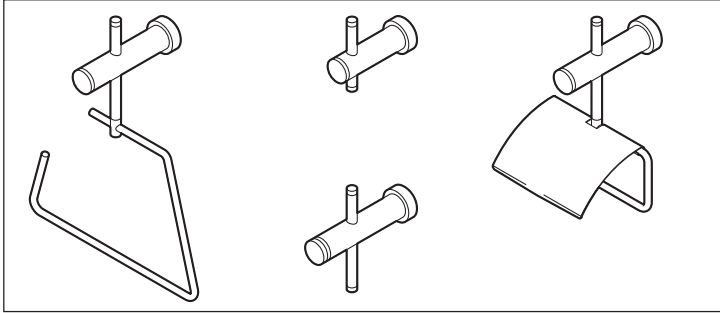


INSTALLATION INSTRUCTIONS

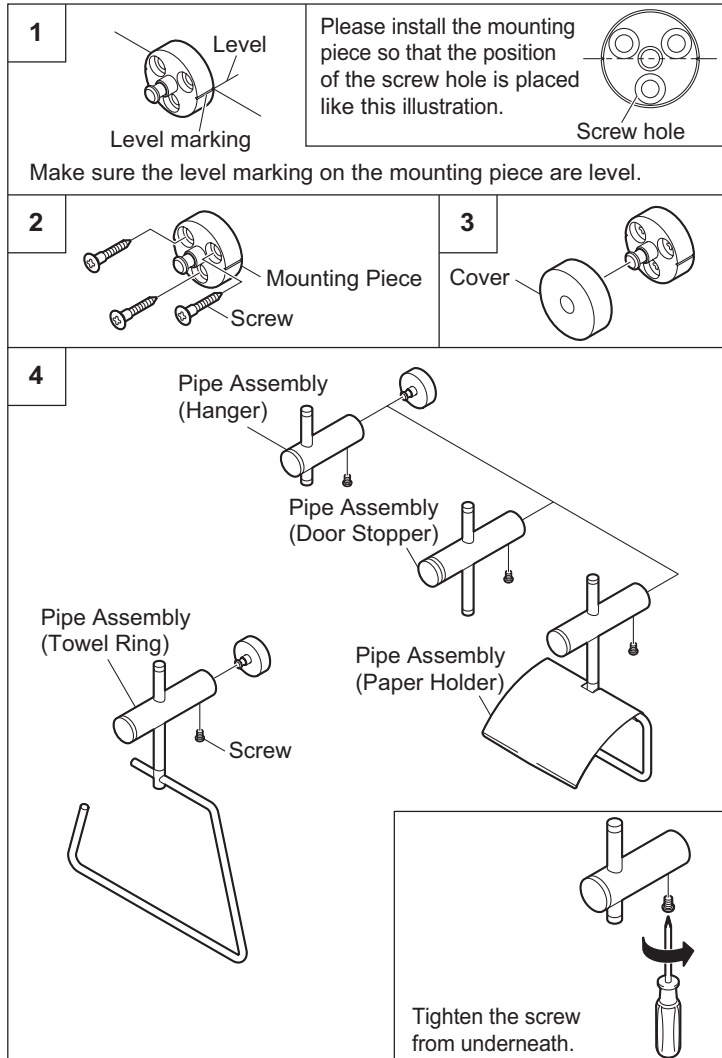
W5703-BW, W8803-BW, W8903-BW, W3703-BW

TOH Accessories

Towel Ring, Hanger, Door Stopper, Paper Holder



1. Make sure that they are level.
Drill the screw holes using 5 mm drill bit suitable for the wall surface.
(If necessary, install the anchors.)
Seal around the anchors with a good quality water proof bathroom sealant.
2. The mounting piece is fixed to the installation position.
Then, tighten the screws.
3. The cover is set onto the mounting piece.
4. Place the accessories (Towel Ring, Hanger, Door Stopper, Paper Holder) into the mounting piece.
Then, tighten the screw from underneath.
5. It confirms whether apparatus is surely fixed after the installation is completed.



LIMITED WARRANTY

SAN-EI products have been manufactured under the highest standards of quality and workmanship, and warrants to the original consumer purchaser that its products are free of defects in material and workmanship.

1. Ceramic cartridges and PVD finishes carry a **limited lifetime warranty** to the **Original Consumer Purchaser** for as long as that consumer purchaser owns his/her/their home. All other parts are warranted for **2 years** after the date of purchase.

2. SAN-EI warrants to the **Commercial Purchaser** that their products, purchased for commercial, industrial or other business use, are free from defects of workmanship and materials for a period of **1 year** after the date of purchase.

All warranties are to the original purchaser and require presentation of original sales receipt.

Warranty is not transferable. **During the warranty period, SAN-EI will, at its option, repair or replace any part or parts which have been determined to be defective if returned at purchaser's expense. This shall be the sole remedy available under this warranty.**

Defects or damage caused by the use of other than genuine SAN-EI parts are not covered by this warranty. Installation or any other labor charges associated with the repair or re-installation of SAN-EI products is not covered by this warranty. Damage due to improper installation, misuse, poor maintenance practices, accident, alcohol, or other organic solvents, or use in any manner contrary to the written instructions provided, whether done by contractor, service company, or end user, are excluded from this warranty. Some states, provinces and nations do not allow the exclusion or limitation of incidental or consequential damages, so the above limitations or exclusions may not apply to you.

This warranty gives you specific legal rights and you may also have other rights which vary from state to state, province to province, nation to nation. SAN-EI will advise you of the procedure to follow in making warranty claims. Simply write to explain the defect and include product instruction manual, along with original proof of purchase receipt showing the store name, address and date of purchase.

Be sure to include your name, address and telephone number.

USER INFORMATION

Faucets made of leaded brass alloys may contribute small amounts of lead to water that is allowed to stand in contact with the brass. The amount of lead contributed by any faucet is highest when the faucet is new.

The following steps may reduce potential exposure to lead from faucets and other parts of the plumbing system.

*Always run the water for a few seconds prior to use for drinking or cooking.

*Use only cold water for drinking or cooking.

*If you wish to flush the entire plumbing system of water that has been standing in the pipes or other fittings. Run the cold water until the temperature of the water drops, indicating water coming from the outside main.

*If you are concerned about lead in your water, have your water tested by a certified laboratory in your area.

CONTACT

In the United States and Canada, please kindly call our office number for answers to any product, installation, or warranty questions.

**- Importer / Master Distributor -
Sanicor International Corp.**

2116 South Grand Ave., Santa Ana, CA 92705

Tel : 714-540-1110 Fax : 714-540-1171